



ORPHEOS

ACCENT LIGHTING

ORPHEOS is a wall-mount diffuser whose single or double vertical light shaft provides elegant accent or wall grazing effects. Digitally controlled RGBW, white or, on request, monochrome LEDs configurations, combined with different optics choices, give maximum chromatic adaptability. The double light shaft version can feature independent LED and optics configurations combined with fully autonomous control of each LED cluster, enhancing absolute design flexibility. The integrated electronic driver guarantees comfortable set-up.

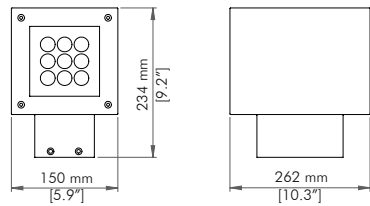


ORPHEOS

GRIVEND 

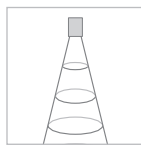
ORPHEO S

GRIVEND 



BEAM ANGLE REFERENCE

SPOT	7°
NARROW	12°
MEDIUM	21°
WIDE	43°



MAX OUTPUT
1300 lm
(SP CW configuration
/Single Emission)

PHOTOMETRIC DETAILS AVAILABLE ON OUR WEBSITE

FEATURES AND OPTIONS



ACCESSORIES



AL2660
WEEZERD 1

CODES

AL4860 ORPHEO S SINGLE EMISSION

AL4862 ORPHEO S DOUBLE EMISSION

OPTICS	LED TYPE	FINISH
SP Spot	RN RGB+W 4000K	W White RAL 9003
NA Narrow	DW From 2700K to 6500K	G GRIVEN Grey
ME Medium	CW Cold White 6500K	A Anthracite RAL 7016
WI Wide	NW Natural White 4000K	B Black RAL 9005
	WW Warm White 3000K	

NOTES

Unless an RDM control is used, ORPHEO S must always be purchased with one AL2660 WeeZerd 1 to set its DMX address

TECHNICAL SPECIFICATIONS

ORPHEO S is an IP66 wall mount diffuser, whose extruded and die-cast aluminium body hosts 12 or 24 high brightness RGBW, Dynamic White, Cold White, Natural White, Warm White or, on request, monochrome power LEDs. Dimensions: 150 mm x 262 mm x 234 mm. Available in DMX mode, it also features RFU (Remote firmware update) and RDM (Remote device management) functions. Unless an RDM control is used, ORPHEO S must always be purchased with one AL2660 WeeZerd 1 to set its DMX address. Power supply: 100÷277V / 50-60Hz. Power consumption: Single emission: 0.17A @ 230V / 18W max, Double emission: 0.33A @ 230V / 36W max. An Electrical Class I appliance, it also features self-resetting fuse protection. Operating temperature: -30°C to 50°C (-22°F to 122°F).

DIGITAL CONTROL SYSTEM SPECIFICATIONS AND CONFIGURATIONS AVAILABLE ON OUR WEBSITE

